

**TOWORKFOR®**



<b>X-FAST</b>	<b>4-7</b>
<b>SAFETY RUNNERS</b>	<b>8-13</b>
<b>FULL-GRIP   MICHELIN</b>	<b>14-17</b>
<b>URBAN</b>	<b>18-19</b>
<b>STREET</b>	<b>20-23</b>
<b>WORKING CLASS HERO</b>	<b>24-27</b>
<b>SPORT 2K14</b>	<b>28-31</b>
<b>LADY</b>	<b>32-33</b>
<b>ATOMIC</b>	<b>34-35</b>
<b>SPORT</b>	<b>36-37</b>
<b>FUSION</b>	<b>38-39</b>
<b>CITY</b>	<b>40-41</b>
<b>ADVANTAGE</b>	<b>42-43</b>
<b>UTILITY</b>	<b>44-45</b>
<b>PROMOTIONAL MATERIALS</b>	<b>48</b>
<b>ACESSORIES</b>	<b>49</b>
<b>TOWORKFOR SOLES</b>	<b>50</b>
<b>TOWORKFOR MATERIALS</b>	<b>51</b>
<b>STANDARDS</b>	<b>52</b>



# X-FAST

## TECHNICAL SPECS

### X-HEEL SUPPORT

Superb stability and flexibility for the foot.

### BIORELAX INSOCK

Total recovery insock with active carbon filter to reduce odour.

### Q-FLEX INSOLE

Anti-perforation, non-metallic and anti-static insole.

### SAFELIGHT

#### EVA SAFETY SOLE

Smooth, lightweight with excellent anti-slip and heat resistance features.

**SRC HRO Certification**

### ARBOL HYDRO FABRIC

Reflective technology with excellent water resistance features.

**S3 Certification**

### ALUMINIUM TOE CAP

Lightweight toe cap against pressure up to 200 joules.

**ONE OF THE LIGHTEST  
SAFETY RUNNERS EVER MADE**

# X-FAST



## FASTER THAN LIGHTNING. LIGHT AS A FEATHER.

Evolution is paramount.  
The X-FAST™ improves the world of safety with an  
updated design and a new exclusive technology:  
Eva Safety Sole - SRC & HRO.

Making it one of the lightest Safety Runners ever made.



### X-N2

8A01.80 S3 SRC HRO

**Material** Arbol Hydro Fabric  
**Lining** Poromax  
**Sole** Safelight - EVA Safety  
**Toe Cap** Aluminium  
**Insole** Q-flex - Composite  
**Insock** Biorelax  
**Size** 35 - 48



### X-C02

8A01.21 S3 SRC HRO

**Material** Grey Microfiber  
**Lining** Poromax  
**Sole** Safelight - EVA Safety  
**Toe Cap** Aluminium  
**Insole** Q-flex - Composite  
**Insock** Biorelax  
**Size** 35 - 48



### X-02

8A01.20 S3 SRC HRO

**Material** Black Microfiber  
**Lining** Poromax  
**Sole** Safelight - EVA Safety  
**Toe Cap** Aluminium  
**Insole** Q-flex - Composite  
**Insock** Biorelax  
**Size** 35 - 48



### X-AR

8A01.23 S3 SRC HRO

**Material** Blue Microfiber  
**Lining** Poromax  
**Sole** Safelight - EVA Safety  
**Toe Cap** Aluminium  
**Insole** Q-flex - Composite  
**Insock** Biorelax  
**Size** 35 - 48



# SAFETY RUNNERS®

## TECHNICAL SPECS

### BIORELAX INSOCK

Total recovery insock with active carbon filter to reduce odour.



### MICROFIBER

Water resistant and highly durable material made of polyester fibers. Animal Friendly.

**S3 Certification**

### Q-FLEX INSOLE

Anti-perforation, non-metallic and anti-static insole.

### ALUMINIUM TOE CAP

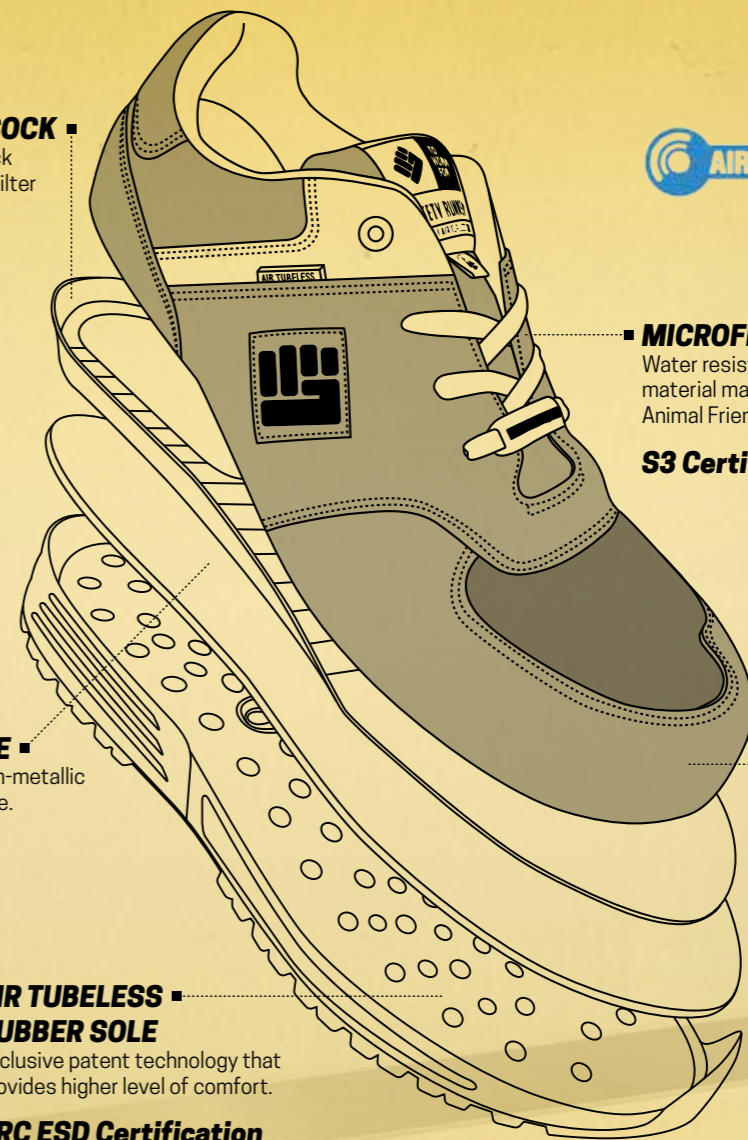
Lightweight toe cap against pressure up to 200 joules.

### AIR TUBELESS RUBBER SOLE

Exclusive patent technology that provides higher level of comfort.

**SRC ESD Certification**

**A REVOLUTIONARY  
COMFORT SYSTEM**





### URBAN

8A86.00 S3 SRC ESD

**Material** Black & Grey Microfiber  
**Lining** Poromax  
**Sole** Air Tubeless - Rubber  
**Toe Cap** Aluminium  
**Insole** Q-flex - Composite  
**Insock** Biorelax  
**Size** 36 - 47



### GRAFFITI

8A86.07 S3 SRC ESD

**Material** Black & Red Microfiber  
**Lining** Poromax  
**Sole** Air Tubeless - Rubber  
**Toe Cap** Aluminium  
**Insole** Q-flex - Composite  
**Insock** Biorelax  
**Size** 36 - 47



### REBEL

8B86.07 S3 SRC ESD

**Material** Black & Red Microfiber  
**Lining** Poromax  
**Sole** Air Tubeless - Rubber  
**Toe Cap** Aluminium  
**Insole** Q-flex - Composite  
**Insock** Biorelax  
**Size** 36 - 47



### POWER

8B86.00 S3 SRC ESD

**Material** Black & Grey Microfiber  
**Lining** Poromax  
**Sole** Air Tubeless - Rubber  
**Toe Cap** Aluminium  
**Insole** Q-flex - Composite  
**Insock** Biorelax  
**Size** 36 - 47



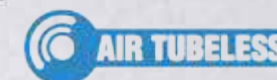
**TOWORKFOR®**  
 INTRODUCES

# AIR TUBELESS TECHNOLOGY

## OPTIMAL PERFORMANCE

## EXTREME COMFORT

PATENTED MIDSOLE SYSTEM, TESTED  
 AND CERTIFICATED BY INESCOPI



■ **PREVENTS LOW BACK PAIN**  
 Reduction in lower back muscle activity that prevents low back pain

■ **UP TO 52% INCREASED THERMAL INSULATION**  
 Providing warmer feet

■ **IMPROVED SHOCK ABSORPTION**  
 Reduces impact forces up to 55%



## STREET

8A11.30 S3 SRC ESD

**Material** Black Microfiber  
**Lining** Poromax  
**Sole** Air Tubeless - Rubber  
**Toe Cap** Aluminium  
**Insole** Q-flex - Composite  
**Insock** Biorelax  
**Size** 36 - 47



## STRIDE

8A86.13 S3 SRC ESD

**Material** Grey & Blue Microfiber  
**Lining** Poromax  
**Sole** Air Tubeless - Rubber  
**Toe Cap** Aluminium  
**Insole** Q-flex - Composite  
**Insock** Biorelax  
**Size** 36 - 47



## JUMPER

8A11.31 S1P SRC ESD

**Material** Grey Microfiber  
**Lining** Poromax  
**Sole** Air Tubeless - Rubber  
**Toe Cap** Aluminium  
**Insole** Q-flex - Composite  
**Insock** Biorelax  
**Size** 36 - 47



## RUNNER

8A81.50 S1P SRC ESD

**Material** Grey Microfiber  
**Lining** Poromax  
**Sole** Air Tubeless - Rubber  
**Toe Cap** Aluminium  
**Insole** Q-flex - Composite  
**Insock** Biorelax  
**Size** 36 - 47



The new SAFETY RUNNERS® are exclusively equipped with the AIR TUBELESS sole system, a unique and patented technology, also used in running shoes. It guarantees an extreme comfort and optimal performance during a hard day's work, from the beginning until the end. With the development of safety runners, TOWORKFOR® now presents its own performance mentality: **FINISH WHAT YOU START.**

# FINISH WHAT YOU START

## COMFORT TECHNOLOGY





**FULL  
GRIP™**

## TECHNICAL SPECS

### HEEL SUPPORT SYSTEM

Special system that strengthens the heel portion of the footwear. Stabilizes the leg and protects the heel.

### COMFORT INSOCK

Soft and light with anti-static points. Easy to remove for cleaning and drying.

### Q-FLEX INSOLE

Anti-perforation, non-metallic and anti-static insole.

### MICHELIN NORTH NITRILE RUBBER SOLE

Exclusive design and compound with great abrasion resistance, anti-static characteristics and excellent oils and fire resistance.

**SRC HRO Certification**



### NUBUCK LEATHER

Long lasting, flexible and breathable.

**S3 Certification**

### CARBONLIGHT TOE CAP

Non-metallic and ultra-light toe cap against pressure up to 200 joules.

### TOE REINFORCEMENT

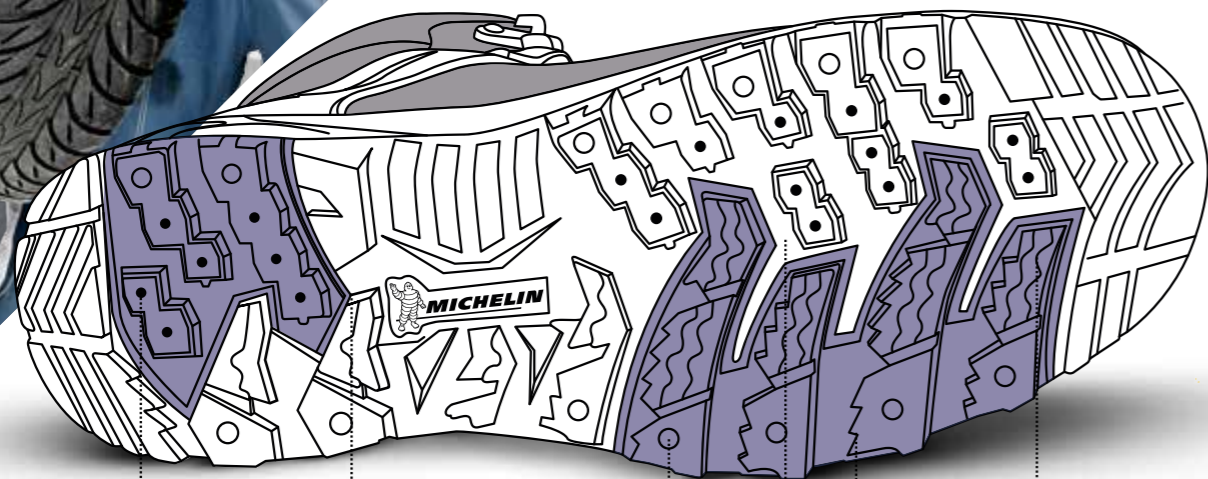
Extra protection and resistance.

**TRACTION & GRIP TECHNOLOGY  
WITH MICHELIN SOLE**



**NITRILE RUBBER SOLE**

**TECHNOLOGY**



**ANTI-SLIP TREAD**

For excellent adherence on all types of slippery floor surfaces

**PUMPS**

For absorbing and evacuating water to improve tread contact with the road surface

**HIGH EDGED TREAD**

For maximum traction

**BITING EDGE**

For optimal performance on ice and snow

**SELF CLEANING TREAD DESIGN**

**SPIKES**

To break water surface

**BRAKE**  
6A06.20 S3 SRC HRO

Material Black Nubuck Leather  
Lining Poromax  
Sole Michelin North - Nitrile Rubber  
Toe Cap CarbonLight - Composite  
Insole Q-flex - Composite  
Insock Comfort  
Size 39 - 47



**WHEELS**  
6B06.20 S3 SRC HRO

Material Black Nubuck Leather  
Lining Poromax  
Sole Michelin North - Nitrile Rubber  
Toe Cap CarbonLight - Composite  
Insole Q-flex - Composite  
Insock Comfort  
Size 39 - 47



**TRACTION**  
6C07.00 S3 SRC HRO

Material Black Premium Leather  
Lining Poromax + Hydratec  
Sole Michelin North - Nitrile Rubber  
Toe Cap CarbonLight - Composite  
Insole Q-flex - Composite  
Insock Comfort  
Size 39 - 47



# URBAN

## TECHNICAL SPECS

### MICROFIBER

Water resistant and highly durable material made of polyester fibers. Animal Friendly.

### S3 Certification

### Q-FLEX INSOLE

Anti-perforation, non-metallic and anti-static insole.

### BASKET RUBBER SOLE

Exclusive design that guarantees higher flexibility, comfort and elasticity.

### SRC ESD Certification

### STEEL TOE CAP

Protects against pressure up to 200 joules.

### COMFORT INSOCK

Soft and light with anti-static points. Easy to remove for cleaning and drying.

## MODERN SAFETY SHOES



### HALF PIPE

8A11.23 S3 SRC ESD

**Material** Blue Microfiber  
**Lining** Poromax  
**Sole** Basket - Rubber  
**Toe Cap** Steel  
**Insole** Q-flex - Composite  
**Insock** Comfort  
**Size** 35 - 47



### GHOST

8A11.21 S3 SRC ESD

**Material** Grey Microfiber  
**Lining** Poromax  
**Sole** Basket - Rubber  
**Toe Cap** Steel  
**Insole** Q-flex - Composite  
**Insock** Comfort  
**Size** 35 - 47



## BE SAFE BE URBAN

Safety Shoes Collection for Active Workers



### RUBBER SOLE | SRC & ESD

The exclusive design was inspired by basket sneakers to guarantee higher flexibility, optimal comfort and great elasticity. Excellent slip resistance, either in wet steel floor or ceramic floor. Electro-static discharge certification.

# STREET

## TECHNICAL SPECS



### ■ LADY LAST

Respects the anatomy of the female foot with a wider toe area and a narrower heel and ankle zone.

### ■ COMFORT INSOCK

Soft and light with anti-static points. Easy to remove for cleaning and drying.

### ■ MICROFIBER

Water resistant and highly durable material made of polyester fibers. Animal Friendly.

### S3 Certification

### ■ Q-FLEX INSOLE

Anti-perforation, non-metallic and anti-static insole.

### ■ ALUMINIUM TOE CAP

Lightweight toe cap against pressure up to 200 joules.

### ■ ATOMIC

### BICOLOR TPU SOLE

Micro geometric hexagon trace which ensures excellent anti-slip features.

### SRC Certification

**SAFETY SHOES  
JUST FOR LADIES**



**YOU**  
**BELIEVE**  
**in**  
**YOU**

An exclusive collection of safety sneakers just for ladies.

A lady last respects the anatomy of the female foot with a wider toe area and narrower heel and ankle zone. That ensures greater comfort according to ergonomic principles.  
The range of colors make every woman feel like a lady every day in every work.



**BAHNHOFSTRASSE**  
8A00.23 S3 SRC

**Material** Blue Microfiber  
**Lining** Poromax  
**Sole** Atomic - Bicolor TPU  
**Toe Cap** Aluminium  
**Insole** Q-flex - Composite  
**Insock** Comfort  
**Size** 35 - 42



**BOND STREET**  
8A00.20 S3 SRC

**Material** Black Microfiber  
**Lining** Poromax  
**Sole** Atomic - Bicolor TPU  
**Toe Cap** Aluminium  
**Insole** Q-flex - Composite  
**Insock** Comfort  
**Size** 35 - 42



**GINZA**  
8A00.24 S3 SRC

**Material** Purple Microfiber  
**Lining** Poromax  
**Sole** Atomic - Bicolor TPU  
**Toe Cap** Aluminium  
**Insole** Q-flex - Composite  
**Insock** Comfort  
**Size** 35 - 42



**VIA MONTE NAPOLEONE**  
8A00.25 S1P SRC

**Material** Yellow Microfiber  
**Lining** Poromax  
**Sole** Atomic - Bicolor TPU  
**Toe Cap** Aluminium  
**Insole** Q-flex - Composite  
**Insock** Comfort  
**Size** 35 - 42



**AVENUE MONTAIGNE**  
8A00.22 S1P SRC

**Material** Blue Microfiber  
**Lining** Poromax  
**Sole** Atomic - Bicolor TPU  
**Toe Cap** Aluminium  
**Insole** Q-flex - Composite  
**Insock** Comfort  
**Size** 35 - 42



**FIFTH AVENUE**  
8A00.21 S1P SRC

**Material** Grey Microfiber  
**Lining** Poromax  
**Sole** Atomic - Bicolor TPU  
**Toe Cap** Aluminium  
**Insole** Q-flex - Composite  
**Insock** Comfort  
**Size** 35 - 42





# WORKING CLASS HERO

## TECHNICAL SPECS

**COMFORT INSOCK** ■  
Soft and light with anti-static points. Easy to remove for cleaning and drying.

**Q-FLEX INSOLE** ■  
Anti-perforation, non-metallic and anti-static insole.

**HERO** ■  
**NITRILE RUBBER SOLE**  
Excellent adhesion to the surface, either in wet steel floor or irregular industrial floor. Resistant against high temperatures up to 300°C.

**SRC HRO Certification**

■ **NUBUCK LEATHER**  
Long lasting, flexible and breathable.  
**S3 Certification**

■ **CARBONLIGHT TOE CAP**  
Non-metallic and ultra-light toe cap against pressure up to 200 joules.



**SAFETY SHOES  
FOR HARD WORKERS**

# THE NEW 'HERO' SOLE. MORE GRIP ON EVERY GROUND.

The 'HERO' sole has a revolutionary vintage design that makes the shoe perfectly suitable for all terrains. It offers excellent grip, effective energy absorption and comfortable rebound. The sole is self-cleaning and resistant to high temperatures of up to 300°C.



**BULL**  
8A67.22 S3 SRC HRO

**Material** Brown Nubuck Leather  
**Lining** Space 3D  
**Sole** Hero - Nitrile Rubber  
**Toe Cap** CarbonLight - Composite  
**Insole** Q-flex - Composite  
**Insock** Comfort  
**Size** 35 - 51



**GORILLA**  
8A67.20 S3 SRC HRO

**Material** Black Nubuck Leather  
**Lining** Space 3D  
**Sole** Hero - Nitrile Rubber  
**Toe Cap** CarbonLight - Composite  
**Insole** Q-flex - Composite  
**Insock** Comfort  
**Size** 35 - 51



**TIGER**  
8B67.26 S3 SRC HRO

**Material** Yellow Nubuck Leather  
**Lining** Space 3D  
**Sole** Hero - Nitrile Rubber  
**Toe Cap** CarbonLight - Composite  
**Insole** Q-flex - Composite  
**Insock** Comfort  
**Size** 35 - 51



**LYNX**  
8B67.23 S3 SRC HRO

**Material** Blue Nubuck Leather  
**Lining** Space 3D  
**Sole** Hero - Nitrile Rubber  
**Toe Cap** CarbonLight - Composite  
**Insole** Q-flex - Composite  
**Insock** Comfort  
**Size** 35 - 51



**BISON**  
8B67.22 S3 SRC HRO

**Material** Brown Nubuck Leather  
**Lining** Space 3D  
**Sole** Hero - Nitrile Rubber  
**Toe Cap** CarbonLight - Composite  
**Insole** Q-flex - Composite  
**Insock** Comfort  
**Size** 35 - 51



**PANTHER**  
8B67.20 S3 SRC HRO

**Material** Black Nubuck Leather  
**Lining** Space 3D  
**Sole** Hero - Nitrile Rubber  
**Toe Cap** CarbonLight - Composite  
**Insole** Q-flex - Composite  
**Insock** Comfort  
**Size** 35 - 51





# SPORT 2K14

## TECHNICAL SPECS

**COMFORT INSOCK** ■  
Soft and light with anti-static points. Easy to remove for cleaning and drying.

**Q-FLEX INSOLE** ■  
Anti-perforation, non-metallic and anti-static insole.

**SPORT 3 PU | TPU SOLE** ■  
Soft PU midsole that provides comfort and a TPU outsole for good adhesion and abrasion resistance.

**SRC Certification**

■ **NUBUCK LEATHER**  
Long lasting, flexible and breathable.

**S3 Certification**

■ **TOE REINFORCEMENT**  
Extra protection and resistance.

■ **CARBONLIGHT TOE CAP**  
Non-metallic and ultra-light toe cap against pressure up to 200 joules.

**HIGH PERFORMANCE  
SAFETY SHOES**



## MAXIMUM PROTECTION ACROSS THE ENTIRE SOLE SURFACE.

The flat sole offers several advantages to the user's feet. The body weight is distributed equally over the whole foot instead of pressing only on the toes. The rounded heel makes the sole particularly flexible and is equipped with efficient energy absorption. The squared plugs guarantee high grip achieving SRC level.

This dual density polyurethane/TPU sole provides high comfort and shock absorption.



### **BUFFALO** 8B71.20 S3 SRC

**Material** Black Nubuck Leather  
**Lining** Poromax  
**Sole** Sport 3 - PU | TPU  
**Toe Cap** CarbonLight - Composite  
**Insole** Q-flex - Composite  
**Insock** Comfort  
**Size** 35 - 48



### **BEETLE** 8A71.20 S3 SRC

**Material** Black Nubuck Leather  
**Lining** Poromax  
**Sole** Sport 3 - PU | TPU  
**Toe Cap** CarbonLight - Composite  
**Insole** Q-flex - Composite  
**Insock** Comfort  
**Size** 35 - 48



### **WASP** 8A71.30 S1P SRC

**Material** Black Nubuck Leather  
**Lining** Poromax  
**Sole** Sport 3 - PU | TPU  
**Toe Cap** CarbonLight - Composite  
**Insole** Q-flex - Composite  
**Insock** Comfort  
**Size** 35 - 48



### **PANDA** 8A71.22 S3 SRC

**Material** Brown Nubuck Leather  
**Lining** Poromax  
**Sole** Sport 3 - PU | TPU  
**Toe Cap** CarbonLight - Composite  
**Insole** Q-flex - Composite  
**Insock** Comfort  
**Size** 35 - 48



### **FOX** 8B71.22 S3 SRC

**Material** Brown Nubuck Leather  
**Lining** Poromax  
**Sole** Sport 3 - PU | TPU  
**Toe Cap** CarbonLight - Composite  
**Insole** Q-flex - Composite  
**Insock** Comfort  
**Size** 35 - 48



# LADY

## TECHNICAL SPECS

### COMFORT INSOCK

Soft and light with anti-static points. Easy to remove for cleaning and drying.

### REAL LADY LAST

Respects the anatomy of the foot with a wider toe area and a narrower heel and ankle zone.

### NUBUCK LEATHER

Long lasting, flexible and breathable.

### S3 Certification

### Q-FLEX INSOLE

Anti-perforation, non-metallic and anti-static insole.

### SPORT PU SOLE

Extremely light, flexible and elastic.

### SRB Certification

### ALUMINIUM TOE CAP

Lightweight toe cap against pressure up to 200 joules.

### TOE REINFORCEMENT

Extra protection and resistance.

**OUTDOOR SAFETY SHOES  
JUST FOR LADIES**

**TOWORKFOR SAFETY SHOES  
JUST FOR LADIES**



### EVE

8A25.24 S3 SRB

**Material** Black Nubuck Leather  
**Lining** Space 3D  
**Sole** Sport - PU  
**Toe Cap** Aluminium  
**Insole** Q-flex - Composite  
**Insock** Comfort  
**Size** 35 - 42



### OLIVIA

8B25.24 S3 SRB

**Material** Black Nubuck Leather  
**Lining** Space 3D  
**Sole** Sport - PU  
**Toe Cap** Aluminium  
**Insole** Q-flex - Composite  
**Insock** Comfort  
**Size** 35 - 42



# ATOMIC

## TECHNICAL SPECS

### COMFORT INSOCK

Soft and light with anti-static points. Easy to remove for cleaning and drying.

### Q-FLEX INSOLE

Anti-perforation, non-metallic and anti-static insole.

### ATOMIC - BICOLOR TPU SOLE

Micro geometric hexagon trace which ensures excellent anti-slip features.

### SRC Certification

### MICROFIBER

Water resistant and highly durable material made of polyester fibers. Animal Friendly.

### S3 Certification

### ALUMINIUM TOE CAP

Lightweight toe cap against pressure up to 200 joules.

**LIGHT AND TRENDY  
SAFETY SHOES**

### PENGUIN

8A41.20 S3 SRC

**Material** Black Microfiber  
**Lining** Poromax  
**Sole** Atomic - Bicolor TPU  
**Toe Cap** Aluminium  
**Insole** Q-flex - Composite  
**Insock** Comfort  
**Size** 35 - 48



### CHEETAH

8A75.20 S1P SRC

**Material** Black Microfiber  
**Lining** Poromax  
**Sole** Atomic - Bicolor TPU  
**Toe Cap** Aluminium  
**Insole** Q-flex - Composite  
**Insock** Comfort  
**Size** 35 - 48



**LIGHT, BRIGHT AND  
SERIOUSLY EASYGOING.**

Ultra flat, pleasantly light and bright-coloured.  
This sole consists of micro-geometrical hexagonal plugs to guarantee full contact and stability.  
Self-cleaning.



ATOMIC

35

TO WORK FOR

ATOMIC

# SPORT

## TECHNICAL SPECS



**OUTDOOR AND FLEXIBLE  
SAFETY SHOES**



**TEXAS**  
8A08.20 S3 SRB

**Material** Black Nubuck Leather  
**Lining** Space 3D  
**Sole** Sport - PU  
**Toe Cap** CarbonLight - Composite  
**Insole** Q-flex - Composite  
**Insock** Comfort  
**Size** 35 - 48



**DALLAS**  
8A08.29 S3 SRB

**Material** Black Nubuck Leather  
**Lining** Space 3D  
**Sole** Sport - PU  
**Toe Cap** CarbonLight - Composite  
**Insole** Q-flex - Composite  
**Insock** Comfort  
**Size** 35 - 48



**MADEIRA**  
8A51.81 S1P SRB

**Material** Grey Suede Leather  
**Lining** Space 3D  
**Sole** Sport - PU  
**Toe Cap** CarbonLight - Composite  
**Insole** Q-flex - Composite  
**Insock** Comfort  
**Size** 35 - 48



**ACORES**  
8A51.83 S1P SRB

**Material** Blue Suede Leather  
**Lining** Space 3D  
**Sole** Sport - PU  
**Toe Cap** CarbonLight - Composite  
**Insole** Q-flex - Composite  
**Insock** Comfort  
**Size** 35 - 48



# FUSION

## TECHNICAL SPECS

### RUB X PRO HEEL SUPPORT

Higher protection for the foot with extreme balance and stability features.

### HYDRATEC

Waterproof membrane that keeps the foot warm and dry in extreme situations.

### NUBUCK LEATHER

Long lasting, flexible and breathable.

### S3 Certification

### CARBONLIGHT TOE CAP

Non-metallic and ultra-light toe cap against pressure up to 200 joules.

### COMFORT INSOCK

Soft and light with anti-static points. Easy to remove for cleaning and drying.

### Q-FLEX INSOLE

Anti-perforation, non-metallic and anti-static insole.

### FUSION BICOLOR PU SOLE

Extremely soft and comfortable PU midsole in combination with a hard PU outsole which provides great grip.

### SRC Certification

### TOE REINFORCEMENT

Extra protection and resistance.

**ADVANCED, COMFORTABLE AND  
NON METALLIC SAFETY SHOES**



### HIKER BLACK

6B84.20 S3 SRC

**Material** Black Nubuck Leather  
**Lining** Space 3D + Hydratec  
**Sole** Fusion - Bicolor PU  
**Toe Cap** CarbonLight - Composite  
**Insole** Q-flex - Composite  
**Insock** Comfort  
**Size** 36 - 47



### TRAIL BOOT

6B45.20 S3 SRC

**Material** Black Nubuck Leather  
**Lining** Poromax  
**Sole** Fusion - Bicolor PU  
**Toe Cap** CarbonLight - Composite  
**Insole** Q-flex - Composite  
**Insock** Comfort  
**Size** 36 - 47



### TRAIL SHOE

6A45.20 S3 SRC

**Material** Black Nubuck Leather  
**Lining** Poromax  
**Sole** Fusion - Bicolor PU  
**Toe Cap** CarbonLight - Composite  
**Insole** Q-flex - Composite  
**Insock** Comfort  
**Size** 36 - 47



### TRAIL SANDAL

6A10.20 S1P SRC

**Material** Black Nubuck Leather  
**Lining** Poromax  
**Sole** Fusion - Bicolor PU  
**Toe Cap** CarbonLight - Composite  
**Insole** Q-flex - Composite  
**Insock** Comfort  
**Size** 36 - 47



# CITY

## TECHNICAL SPECS

**LEATHER INSOCK** ■  
Soft and breathable.

■ **NUBUCK LEATHER**  
Long lasting, flexible and  
breathable.  
**S3 Certification**

■ **STEEL TOE CAP**  
Protects against pressure  
up to 200 joules.

■ **Q-FLEX INSOLE**  
Anti-perforation, non-metallic  
and anti-static insole.

**CITY PU SOLE** ■  
Resistant to oil, slip and high  
temperatures.  
**SRB Certification**

**SAFE AND STYLISH  
SAFETY SHOES**



**TOWORKFOR SAFETY SHOES**  
**SAFETY IN A CLASSIC STYLE.**



**VIGO**  
8A14.22 S3 SRB

**Material** Brown Nubuck Leather  
**Lining** Aniline Leather  
**Sole** City - PU  
**Toe Cap** Steel  
**Insole** Q-flex - Composite  
**Insock** Comfort  
**Size** 39 - 47



**OXFORD**  
8A04.50 S3 SRB

**Material** Black Full Grain Leather  
**Lining** Aniline Leather  
**Sole** City - PU  
**Toe Cap** Steel  
**Insole** Q-flex - Composite  
**Insock** Cow Leather  
**Size** 39 - 47



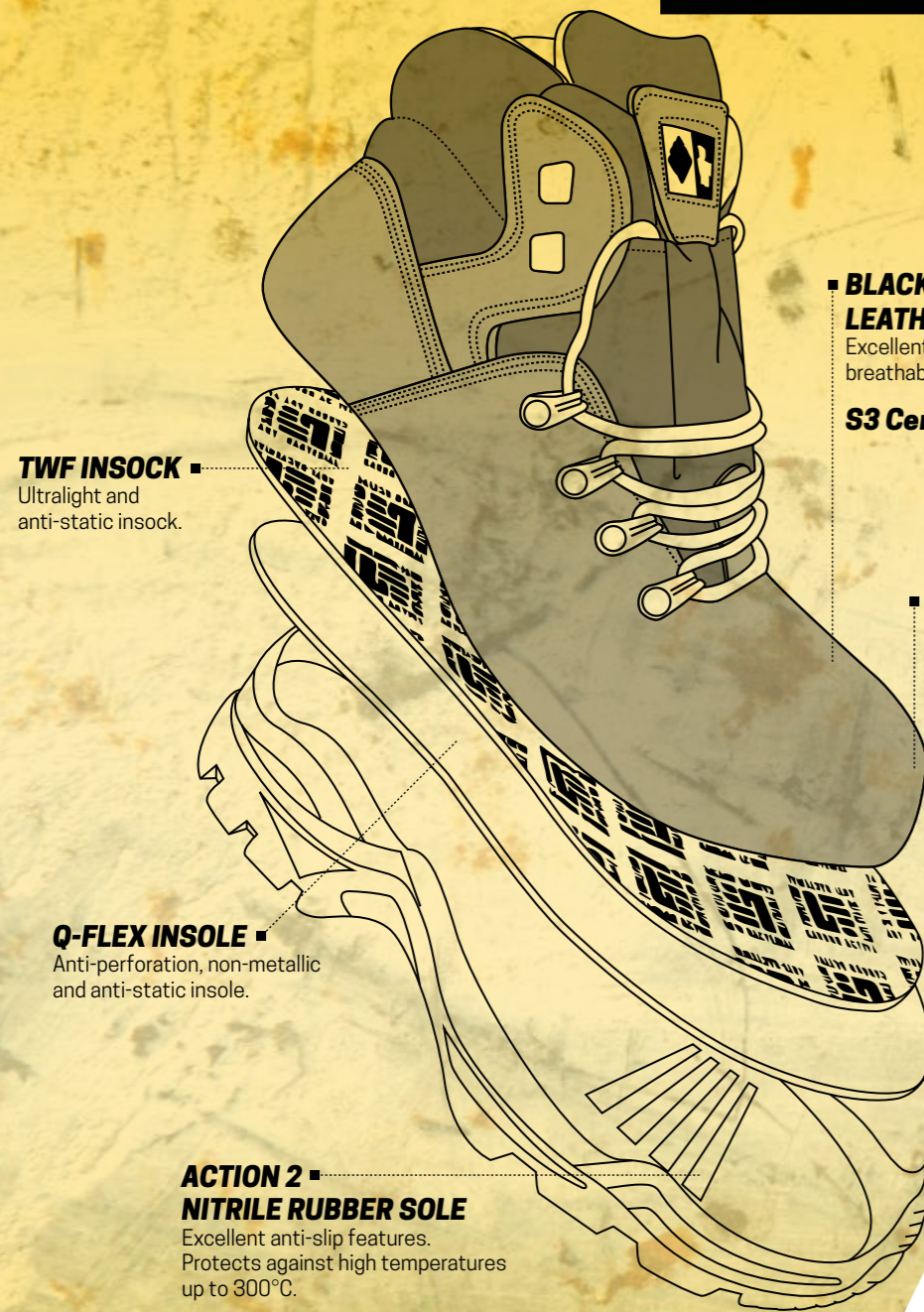
**LIVERPOOL**  
8A04.22 S3 SRB

**Material** Brown Nubuck Leather  
**Lining** Aniline Leather  
**Sole** City - PU  
**Toe Cap** Steel  
**Insole** Q-flex - Composite  
**Insock** Cow Leather  
**Size** 39 - 47



# ADVANTAGE

## TECHNICAL SPECS



■ **BLACK PRINTED LEATHER**  
Excellent printed leather breathable and flexible.  
**S3 Certification**

■ **CARBONLIGHT TOE CAP**  
Non-metallic and ultra-light toe cap against pressure up to 200 joules.

**SRC HRO Certification**

**SOLID AND QUALITY  
SAFETY SHOES**



### PORTO 8A51.90 S3 SRC HRO

**Material** Black Printed Leather  
**Lining** Space 3D  
**Sole** Action 2 - Nitrile Rubber  
**Toe Cap** CarbonLight - Composite  
**Insole** Q-flex - Composite  
**Insock** TWF  
**Size** 35 - 50



### LISBOA 8B51.90 S3 SRC HRO

**Material** Black Printed Leather  
**Lining** Space 3D  
**Sole** Action 2 - Nitrile Rubber  
**Toe Cap** CarbonLight - Composite  
**Insole** Q-flex - Composite  
**Insock** TWF  
**Size** 35 - 50



### COIMBRA 8B50.91 S3 SRC HRO

**Material** Black Printed Leather  
**Lining** Space 3D  
**Sole** Action 2 - Nitrile Rubber  
**Toe Cap** CarbonLight - Composite  
**Insole** Q-flex - Composite  
**Insock** TWF  
**Size** 35 - 50



**EXTREME PROTECTION**

# UTILITY

## TECHNICAL SPECS

**COMFORT INSOCK** ■  
Soft and light with anti-static points.

**Q-FLEX INSOLE** ■  
Anti-perforation, non-metallic and anti-static insole.

**FUSION BICOLOR PU SOLE** ■  
Extremely soft and comfortable PU midsole in combination with a hard PU outsole which provides great grip.

**SRC Certification**

■ **ANILINE PREMIUM LEATHER**  
High quality leather with excellent resistance to water, petrol and oils. Long lasting, flexible and breathable.

**S3 Certification**

■ **CARBONLIGHT TOE CAP**  
Non-metallic and ultra-light toe cap against pressure up to 200 joules.

■ **TOE REINFORCEMENT**  
Extra protection and resistance.

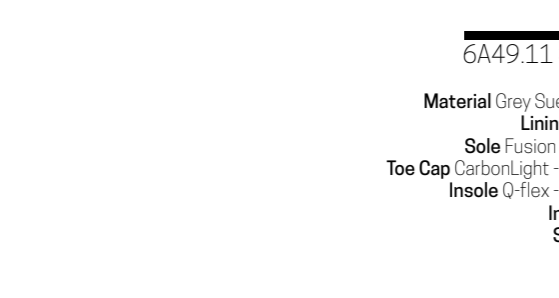
**FAFE**  
6A51.90 S3 SRC

**Material** Black Aniline Leather  
**Lining** Space 3D  
**Sole** Fusion - Bicolor PU  
**Toe Cap** CarbonLight - Composite  
**Insole** Q-flex - Composite  
**Insock** Comfort  
**Size** 36 - 47



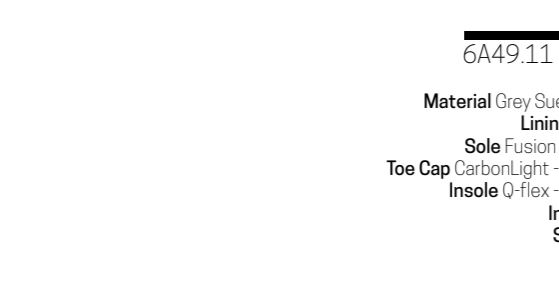
**BEJA**  
6B51.90 S3 SRC

**Material** Black Aniline Leather  
**Lining** Space 3D  
**Sole** Fusion - Bicolor PU  
**Toe Cap** CarbonLight - Composite  
**Insole** Q-flex - Composite  
**Insock** Comfort  
**Size** 36 - 47



**SEIA**  
6A49.11 S1P SRC

**Material** Grey Suede Leather  
**Lining** Space 3D  
**Sole** Fusion - Bicolor PU  
**Toe Cap** CarbonLight - Composite  
**Insole** Q-flex - Composite  
**Insock** Basic  
**Size** 36 - 47



**LAGOS**  
6A08.11 S1P SRC

**Material** Grey Suede Leather  
**Lining** Space 3D  
**Sole** Fusion - Bicolor PU  
**Toe Cap** CarbonLight - Composite  
**Insole** Q-flex - Composite  
**Insock** Basic  
**Size** 36 - 47



**SINES**  
6A49.90 S3 SRC

**Material** Black Printed Leather  
**Lining** Space 3D  
**Sole** Fusion - Bicolor PU  
**Toe Cap** CarbonLight - Composite  
**Insole** Q-flex - Composite  
**Insock** Basic  
**Size** 36 - 47



**ALMADA**  
6B49.90 S3 SRC

**Material** Black Printed Leather  
**Lining** Space 3D  
**Sole** Fusion - Bicolor PU  
**Toe Cap** CarbonLight - Composite  
**Insole** Q-flex - Composite  
**Insock** Basic  
**Size** 36 - 47



**LEIRIA**  
6A49.30 S3 SRC

**Material** Black Printed Leather  
**Lining** Space 3D  
**Sole** Fusion - Bicolor PU  
**Toe Cap** CarbonLight - Composite  
**Insole** Steel  
**Insock** Basic  
**Size** 36 - 47



**MAIA**  
6B49.30 S3 SRC

**Material** Black Printed Leather  
**Lining** Space 3D  
**Sole** Fusion - Bicolor PU  
**Toe Cap** CarbonLight - Composite  
**Insole** Steel  
**Insock** Basic  
**Size** 36 - 47





**PROMOTIONAL MATERIALS**

**ACESSORIES**

**TOWORKFOR SOLES**

**TOWORKFOR MATERIALS**

**TOWORKFOR INSOLES, INSOCKS AND TOECAPS**

**STANDARDS**

PROMOTIONAL MATERIALS

TOWORKFOR PROMOTIONAL MATERIALS ► DELIVERED WITH YOUR ORDER.

WALL POSTERS

Measures 50 X 70 cm



MUPPIE

Measures 68 X 98 cm



FLOOR DISPLAY

Measures 50 x 160 x 50 cm  
Quantity 8 Shoes



COUNTER DISPLAY

Measures 37 x 29 x 17 cm  
Quantity 1 Shoe



Measures 37 x 29 x 17 cm  
Quantity 1 Shoe



ACCESSORIES

INSOCKS



BIORELAX

TOWORKFOR BIORELAX is an anti-fatigue and anti-bacterial insock with carbon active foot bed. This 100% breathable insole is extra-light, antistatic and made with recycled materials. It's a shock proof insole which will maintain its initial shape throughout its lifetime. It has an excellent absorption and desorption features. It absorbs and cushions the shock produced when walking. Absorbs sweat to help keep feet dry and is able to evaporate the sweat very quickly due to the carbon crystals. ECO FRIENDLY INSOLE – CO2 Free Manufacturing Process.

MAIN BENEFITS

- 100% Breathable Insole
- Anti-Fatigue
- CARBON ACTIVE – Anti-Smell Effective Treatment
- Anti-Static
- Made in EU



COMFORT

TOWORKFOR COMFORT Insoles help adapt the flat midsole of the footwear to your foot. The distinct shape helps to stabilize the foot, while the deep, structured heel cup and full-length foam provide support and comfort. TWF Comfort Insoles are made of very soft PU foam with shock absorption points. The anatomical shape is slim and contoured, helps stabilize and support the foot, which can help to reduce stress on feet, ankles and knees. The deep heel helps support the foot during high-impact activities and long distances and supports the plantar arch, guaranteeing maximum comfort. It's antistatic and washable.

MAIN BENEFITS

- Super Soft PU
- Shock Absorption Points
- Anatomical Shape
- Deep Heel Cup
- Made in EU

SHOELACES

Flat and round laces.  
130 cm for Safety Boots.  
100 cm for Safety Shoes.



COUNTER DISPLAY

For 8 insole packages  
and 12 shoelaces packages.



## TOWORKFOR SOLES



**SAFELIGHT**  
EVA SAFETY SOLE  
**SRC HRO**  
Collection: **X-FAST**



**AIR TUBELESS**  
RUBBER SOLE  
**SRC ESD**   
Collection: **SAFETY RUNNERS**



**MICHELIN NORTH**  
NITRILE RUBBER SOLE  
**SRC HRO**   
Collection: **MICHELIN FULL GRIP**



**BASKET**  
RUBBER SOLE  
**SRC ESD**  
Collection: **BASKET**



**ATOMIC**  
TPU BICOLOR SOLE  
**SRC**  
Collection: **STREET | ATOMIC**



**HERO**  
NITRILE RUBBER SOLE  
**SRC HRO**  
Collection: **WORKING CLASS HERO**



**SPORT 3**  
PU | TPU SOLE  
**SRC**  
Collection: **SPORT 2K14**



**CITY**  
PU SOLE  
**SRB**  
Collection: **CITY**



**SPORT**  
PU SOLE  
**SRB**  
Collection: **SPORT**



**ACTION 2**  
NITRILE RUBBER SOLE  
**SRC HRO**  
Collection: **ADVANTAGE**



**FUSION**  
PU | PU SOLE  
**SRC**  
Collection: **FUSION | UTILITY**

EVA is one of the best shock absorption and lightweight material for a sole. The SAFELIGHT sole innovates with a special EVA compound specific for safety shoes: anti-static with excellent abrasion and anti-slip features, resistant to high temperatures up to 300°C.

Rubber is a great material for safety soles, extremely durable, with excellent anti-slip and the best resistance to fuel and oils. The AIR TUBELESS sole presents an exclusive comfort technology biomechanically tested by INESCOP. This innovation prevents foot ache and low back pain, produces smoother walking pattern and reduces 55% of the impact forces enhancing comfort perception. It is an electrostatically dissipative conductive sole - ESD.

Nitrile Rubber is a great material for safety soles, extremely durable, with excellent anti-slip and the best resistance to fuel and oils. The MICHELIN NORTH sole it's multifunctional, designed for all outdoor work activities allowing full control. The unique Michelin design combines a winner ice tire with a winner mud tire providing greater abrasion and anti slip features, improving anti-static characteristics and higher resistance to oils and fire – temperatures up to 300°C.

Rubber is a great material for safety soles, extremely durable, with excellent anti-slip and the best resistance to fuel and oils. The BASKET sole presents an exclusive design inspired by basket sneakers to guarantee higher flexibility, optimal comfort and greater elasticity. This sole has excellent slip resistance, either in wet floor or ceramic floor. It is an electrostatically dissipative conductive sole - ESD.

TPU is a softer, more flexible material for high quality safety footwear soles with superior wear resistance and abrasion resistance. The ATOMIC sole is TPU bicolor and presents a micro-geometric hexagon trace, ensuring full contact with the ground providing excellent slip resistance features. The rounded heel transfers the heel impact force energy to the lifting of the foot increasing the comfort perception.

Nitrile Rubber is a great material for safety soles, extremely durable, with excellent anti-slip and the best resistance to fuel and oils. The HERO sole has a good depth of the groove track, excellent adhesion to the surface, either in wet steel floor or irregular industrial floor and resistance to high temperatures up to 300°C. The rounded heel transfers the heel impact force energy to the lifting of the foot increasing the comfort perception.

Polyurethane is flexible and lightweight. TPU is a softer, more flexible material for high quality safety footwear soles with superior wear resistance and abrasion resistance. The SPORT 3 sole has soft polyurethane midsole, which guarantees excellent restitution of impact energy, softness and comfort for prolonged use. The TPU outsole provides excellent adhesion and protection against high temperatures up to 120°C.

Polyurethane is flexible, lightweight and resistant to oil and 120°C heat. The CITY sole has soft polyurethane which guarantees excellent restitution of impact energy, softness and comfort for prolonged use. It's extremely light, flexible and elastic. It has good adhesion, good slip and heat resistance.

Polyurethane is flexible, lightweight and resistant to oil and 120°C heat. The SPORT sole is extremely light, flexible and elastic. It has good adhesion, resistance to oils and heat with great cushioning. The exclusive design was developed according with biomechanical principles guaranteeing great comfort characteristics.

Nitrile Rubber is a great material for safety soles, extremely durable, with excellent anti-slip and the best resistance to fuel and oils. The ACTION 2 sole has optimum depth allowing an excellent adhesion in all surfaces, either in wet steel floor or irregular industrial floor and resistance to high temperatures up to 300°C. This sole has excellent slip resistance and greater abrasion features.

Polyurethane is flexible, lightweight and resistant to oil and 120°C heat. The FUSION sole has soft polyurethane midsole, which ensures excellent return impact energy, comfort for prolonged use in combination with an hard polyurethane which provides great grip and protection against high temperatures.





**HYDRATEC**  
WATERPROOF MEMBRANE

HYDRATEC® is a special membrane which absorbs the water vapor and removes it through the lining to the outside. This keeps the foot warm and dry even in extreme situations. The best feature about it is that the higher the physical activity, the more efficient the Hydratec membrane works. Hydratec membrane also provides effective protection from low temperatures and rain. You can find this technology in our models TRACTION (page 17) and HIKER BLACK (page 39).

 **HydraTec**  
WaterProof Breathable WindProof

## TOWORKFOR MATERIALS



**ANILINE**  
ANILINE PREMIUM LEATHER

High quality leather with excellent resistance to water, petrol and oils. It is great for heavy physical work, long-lasting. It's very flexible and with good breathability features.



**NUBUCK**  
NUBUCK LEATHER

Soft treated leather, with excellent transpiration characteristics that significantly increases the level of comfort. Excellent resistance and durability.



**SUEDE**  
SUEDE LEATHER

Treated leather with excellent transpiration features and flexibility. No resistance to water, but is perfect to work in hot and dry climate.



**MICROFIBER**  
POLYESTER FIBERS

Innovative material made of polyester fibers, water resistant and highly durable. Allows natural breathing. Presents a wide range of colours that keeps with the shoe throughout its life.



**MESH POROMAX**  
ABSORBENT LINING

Innovative technology due to a special structure of internal chambers that removes hot/moist air over the top of the shoe and facilitates uniform temperature distribution within the shoes.



**MESH SPACE 3D**  
MESH LINING

Special mesh fabric for excellent breathability. High durability of the material allows to keep the properties throughout the period of use.

## TOWORKFOR INSOLES, SOCKS AND TOE CAPS



**CARBONLIGHT**  
COMPOSITE TOE CAP

Protects the toes against mechanical damage and pressure up to 200 Joules. At high loads does not disintegrate. It is thermal insulating. Up to 50% lighter than steel insulating.



**ALUMINIUM**  
ALUMINIUM TOE CAP

Protects the toes against mechanical damage and pressure up to 200 Joules. Not subject to corrosion, has low thermal conductivity. Up to 50% lighter than steel.



**STEEL**  
STEEL TOE CAP

Protects the toes against mechanical damage and pressure up to 200 Joules.



**BIORELAY**  
ANTI-FATIGUE INSOCK

Anti-fatigue and anti-bacterial with carbon active foot bed. It's 100% breathable, extra-light, antistatic, and made with recycled materials.



**COMFORT**  
COMFORT INSOCK

Made of polyurethane foam with anti-static points. Supports and stabilizes the foot, optimizing the distribution of the weight and facilitating the balance. Easy to remove for cleaning and drying.



**Q-FLEX**  
COMPOSITE INSOLE

Non-metallic and anti-static, made of advanced composite materials. Anti-perforation protection, with greater flexibility and ergonomics. It is thermal insulating.



**STEEL**  
STEEL INSOLE

Metallic and anti-static. Anti-perforation protection.



## STANDARDS

**EN ISO 20344:2011** - Test methods for footwear designed as Personal Protective Equipment.

**EN ISO 20345:2011** - Specifications for safety footwear for general use: footwear with specific characteristics to protect the user against injuries that might occur in the work place. Fit out with a toecap, this footwear protects the user against crushing impacts with a protection provided on 200 Joules.

**EN ISO 20347:2012** - Specifications for safety footwear: footwear with specific characteristics to protect the user against injuries that might occur in the work place. (This footwear is not equipped with toecap for feet protection).

SYMBOL	REQUIREMENTS/CHARACTERISTICS	NECESSARY PERFORMANCE
P	Penetration resistance sole	≥1100 N
E	Heel energy absorption	≥ 20 J
A	Antistatic footwear	Between 0,1 and 1000 MΩ
C	Conductive footwear	< 0,1 MΩ
EN 50321	Electrically insulating footwear	Class 0 or 00
WRU	Water penetration resistant uppers	≥ 60 min.
CI	Insulation against cold	Test at -17°C
HI	Insulation against heat	Test at 150°C
HRO	Resistance to hot contact of the outsole	Test at 300°C
FO	Resistance to fuel oil of the outsole	≤ 12%
WR	Water Resistance	≤ 3 cm²
M	Metatarsal protection (only for EN ISO 20345)	≤ 40 mm (Size 41/42)
AN	Ankle protection	≤ 10 kN
CR	Cut resistance of the upper	≥ 2,5 (index)

SYMBOL	SLIP RESISTANCE	NECESSARY PERFORMANCE
SRA	Ceramic + Sodium lauryl sulfate	Heel ≥ 0.28 / flat ≥ 0.32
SRB	Steel + glycerin	Heel ≥ 0.13 / flat ≥ 0.18
SRC	SRA + SRB	
ESD	Electrostatic discharge (EN 61340-2-1)	Between 0,1 and 35 MΩ

CATEGORY	CLASS	REQUIREMENTS	SYMBOLS
SB		Shoe with basic requirements - footwear with toecap - resistant to 200 Joules	
S1	I	Closed heel area   Antistatic properties   Heel energy absorption   Resistance to fuel oil   Resistance to oils	A E FO
S1P	I	Like S1 integrated by perforation resistant	A/E/FO/P
S2	I	Like S1 integrated by water penetration and absorption	A/E/FO WRU
S3	I	Like S2 integrated by perforation resistant   Cleated outsole	A/E/FO/ WRU/P
O1	I	Closed heel area   Antistatic properties   Heel energy absorption	A E
O2	I	Like O1 integrated by water penetration and absorption	A/E/WRU

### MATERIALS AND PRODUCTION:

All the materials used, either natural or synthetic, and also the applied production techniques were chosen to comply with the requirements of the above European standard in what concerns safety, ergonomics and comfort.

Besides the required basic characteristics, the footwear may have additional characteristics indicated by the symbols or categories in the labels stitched inside the footwear.

## DIAGRAM LEGENDS



Resistant sole up to 300°C



100% non metallic



Water resistant



HYDRATEC - waterproof membrane



Thinsulate



ESD (ElectroStatic Discharge)



Q-FLEX - Perforation resistant



STEEL - Perforation resistant



CARBONLIGHT - Toecap impact resistant up to 200 Joules



ALUMINIUM - Toecap impact resistant up to 200 Joules



STEEL - Toecap impact resistant up to 200 Joules



AIR TUBELESS (Anti-fatigue tubular sole)

MATERIALS

51

TOWORKFOR®

SOLES



**TO  
WORK  
FOR®**



**AMF, Lda**

Rua São Cipriano nº658  
Tabuadelo  
4835-461 Guimarães  
Portugal



+351 253 527 163



info@toworkfor.pt



**TOWORKFOR.PT**

BUILT BY **AMF** 

**OFFICIAL DISTRIBUTOR**